

**Boschhoek Update August 2014**

***BUSH LOVERS @ BOSCHHOEK!!***



**Welcome to Boschhoek!!**

**What an afternoon did we have on Wednesday! On a drive encompassing Savanna, Ochre Krantz, Kudu Ridge, Eagle's Nest, Fountain View, the track to Wildeseringwoud, Rocky Creek and Waterfall,**



**our tally included no less than a herd of blesbuck, waterbuck, a herd of mountain reedbuck, a herd of impala, a herd of kudu and tracks of giraffe and zebra.**



**Confluence Pools was also the setting for otter and baboon tracks. And after all that, I was back in Pretoria by 17h00. Wow!**

**The rest of Boschhoek is all a flurry of activity!**

**Die Willevy/The Wild Fig, Boschhoek's very own watering hole, is done!**



**With innovative designs, materials and finishes, the building itself acts as a true thought and smile provoking ambassador for Boschhoek, taking its cue and its name from the amazing tree under which it shelters.**



**The sand covered roof and window frames from reclaimed wood, galvanised basins, fruit jar chandeliers, piped towel rails, corrugated sliding doors, wire basket boma and lovely hearth all speak a language that will hardly be understood in the city, but makes ultimate sense in the bush.**





Believe it or not, in keeping with the spirit of Boschhoek these custom made items enabled huge cost savings as opposed to ordinary shelf offerings.

From a practical perspective, in addition to the Tree, the building provides a kitchen, an indoors function area expanding into a canvas enclosable breezeway, an office for Jandre, a Bored Room (sic), toilets, change rooms and showers for those using the farm dam style swimming pool.



A word of heartfelt thanks to Piet Roos and his team from Foxtail Construction for taking the initiative, including the evocative materials and finishes, and completing the building with very little input from ourselves. Thanks also for making available your wood and steel factory premises to create all those special elements. Feel free to contact Piet at (082)574-7620 [piet@foxtail.co.za](mailto:piet@foxtail.co.za) Brick and mortar aside, they also have extensive experience in lodge building with wood, stone and other alternative materials.

Whilst exploring the Wild Fig, allow me to introduce our Boschhoek Share-a-Chair initiative to those growing roots in this amazing corner of Berg and Bush. To date, the developer has equipped our gathering place with several necessities, including a fridge-freezer, stove, oven, a big flat screen television and a large number of utility chairs. However, we wish to give everyone the opportunity to share in and take ownership of this lovely facility.

Those who attended the first AGM at the Asbos Theatre at the Karoo Cafe in Pretoria will remember the setup there.



An eclectic mix of used chairs creates a laid back atmosphere highly conducive to relaxed *kuiering*. We are building on the same concept, with the request that you have a look in your garage or local shop for a used chair, a lounge chair or even a couch of any description. Write your particulars in an unobtrusive place, and bring it along when next you visit. We'll grow the collection over time and in ten or thirty years from now you may find your grandchildren upturning chairs and looking for yours!

But, 'nough said, the Wild Fig is meant as a *kuierplek*, and *kuier* we did on Saturday! Following on the memorable Giraffe Release Celebration in September 2013, our management team Jandre and Ane Higgo again excelled in taking the initiative to gather around 140 bush lovers at Boschhoek, building memories for years to come!

It kicked off with a host of interesting (!) activities, taking us to some secret spots on Boschhoek's almost 1500 hectares of valleys and mountains



before returning to the Wild Fig for a spit braai and a *kuier* of note!





Jandre, together with HOA directors Tassilo and Ian had the honour to hand out some mouth watering prizes, whilst several Boschhoek suppliers went out of their way to ensure that the day was a huge success. Thelma, we look forward to next year!

Elsewhere on Boschhoek, building is continuing apace.



Three houses have been completed, around 7 are under way and a large number are in the offing. Costs ranging from well below R300 000 to several million reflect the Boschhoek ethos of variety and freedom of choice, with quality and blending in with the bush as primary provisos. No minimum size allows you to start small and expand over time. Let Boschhoek be your bush building playground. Go wild, and create an abode that will refuse to let the city in. Become part of the bush, and let nature be your home! *Die skeefste boshuisie* wins the prize... See <http://www.boschhoekmountain.co.za/files/Newsletter%20April%202014.pdf> for some ideas.

Pieter Koekemoer from Waterberg Earthworks has promised that he will be on site by Monday to start work on the exquisite new link road to the Wild Fig across an existing dam downstream from the farm buildings. We look forward to seeing your artwork in the bush, Pieter! Thanks also to Johan Duvenhage from Encotech Civil Engineers for his input.

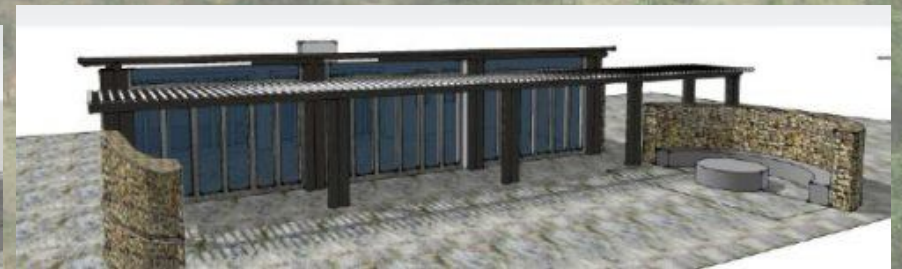
On the marketing front, enquiries and sales are continuing at their baffling pace. We'd like to welcome Errol and his family from Kudu Ridge C to mark our 86th sale, and wish you joy on Boschhoek for generations to come! With around 30 stunning bush stands available at prices ranging from R449 000 to R500 000 and slightly beyond,



our full page ads in the , and continue to whisper the secret of Boschhoek, reaching out to those wishing to walk life's path with nature as their companion.

**Share a Lodge**  
**@R300 000**  
Own a 10% share, a week every 2 months  
Shared costs @ actual minimum

, our current offering for those wishing to regularly refresh their soul whilst sharing costs with likeminded others, is taking shape. At Kudu Ridge B, the highest stand on Boschhoek with a view forever, we are creating an earthy 8-12 sleeper furnished bush lodge.



The configuration of two separate sleeper chalets in conjunction with a shared living area enables you to share Boschhoek with friends and family. Those wishing to share regularly may purchase jointly, bringing the cost down to R150 000 per family. See <http://www.boschhoekmountain.co.za/files/Shared%20Lodges%20Info.pdf> for more information, and do let me know if you would like to be added to the Shared Lodge contact list.

As the first stirrings of spring slowly start touching, we conclude this latest Boschhoek update by again extending an invitation to those who have not yet had the privilege to experience nature's own to let Jandre take you out and share some of Boschhoek's secrets. Breathe deeply, and listen...

Combine your visit with a memorable light meal at Leeuwenhof Country Lodge and Garden Spa next door and make a day outing of it. Even better, spend the night, let Boschhoek lure you back the following day, and a lifetime thereafter...

Call me to arrange.

Bush Greetings!



The Boschhoek Team  
[www.boschhoekmountain.co.za](http://www.boschhoekmountain.co.za)  
Herbert Smith (083)654-8201



Full title 1-2 Ha stands from R399 000; Stand PLUS Bush Lodge from R750 000 (or less)  
Share a furnished lodge @ R300 000  
Waterberg (Modimolle/Nylstroom) 1.5 hrs from Pretoria, 2 hours from Johannesburg



For previous newsletters, see <http://www.boschhoekmountain.co.za/Newsletter.html>